



RG-WALL1600-M6600E

V1.0

©2013



---

	RG-WALL1600-M6600E
	1.2

# 1

RG-WALL1600-M6600E

IPSec SSL VPN Web  
 IPv4 IPv6 NAC SSL

RG-WALL1600-M6600E

RG-WALL1600-M6600E

## 1.1 RG-WALL1600-M6600E

	RG-WALL1600-M6600E
	0 to 40°C
	-25 to 70°C
	20% 90% RH
	7.6Kg
	380x 432 x 44.45 L * W * H mm 1RU
	100-240 VAC, 50-60 Hz
	110 V / 3 A, 220 V / 1.5 A
/	95W/180 W
	335 BTU/h

---

RG-WALL 1600-M6600E	A
---------------------	---

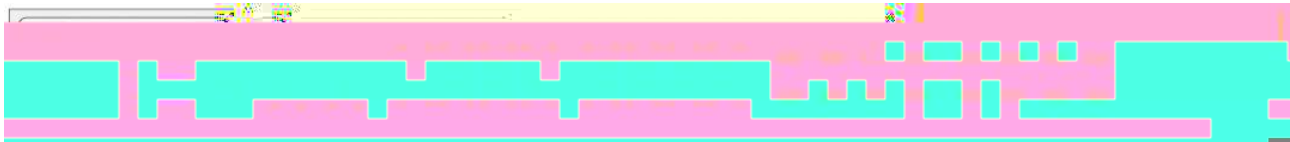
---

RG-WALL1600-M6600E

1

/HA 2 RJ45 WAN 16 GE SFP 1 USB 1 Console 2 GE RJ45  
 16 GE RJ45

1-1 RG-WALL1600-M6600E





---

## 2

### 2.1

---

RG-WALL1600-M6600E

---

#### 2.1.1

#### 2.1.2

---

---

#### 2.1.3

---

---

#### 2.1.4

RG-WALL1600-M6600E

RG-WALL1600-M6600E

---

## 2.5

---

1~10

" 3.8

---

## 2.1.5

RG-WALL1600-M6600E

3

---

## 2.2

RG-WALL1600-M6600E

### 2.2.3

RG-WALL1600-M6600E

RG-WALL1600-M6600E

0°C-40°C	20%-90%

1.5M

0.4M

### 2.2.4

	0.5	1	3	5
/	1.4 x 10	7 x 10	2.4 x 10	1.3 x 10

RG-WALL1600-M6600E



### 2.2.7 EMI

## 2.3

## 2.4

---


---

RG-WALL1600-M6600E

---

## 2.5

---

	2	USB	2	Console	8	4
		2 SFP				

---

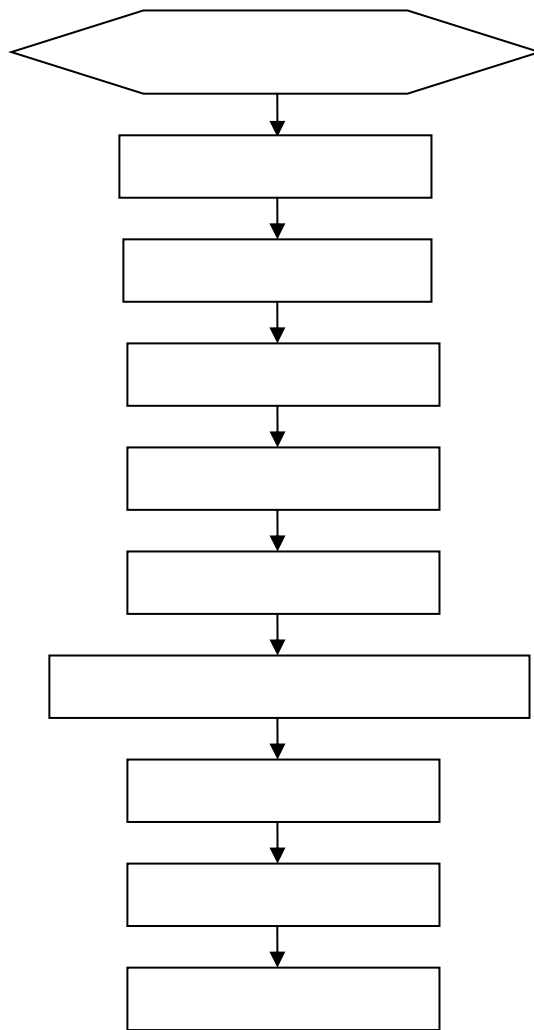
### 3

RG-WALL1600-M6600E

---

---

#### 3.1



#### 3.2

RG-WALL1600-M6600E

### 3.3

5mm

RG-WALL1600-M6600E  
M6600E

RG-WALL1600-

---

### 3.4

RG-WALL1600-M6600E

10mm

F ;

1)

1)

2)

3)

4)

### **3.7**

1)

2)

3)

### **3.8**

### **3.9**

---

SFP

---

SFP

4)

5)

6)

- 1.
2. SFP
- 3.
4. SFP  
SFP

3-7

- 5.
- 6.

---

SFP

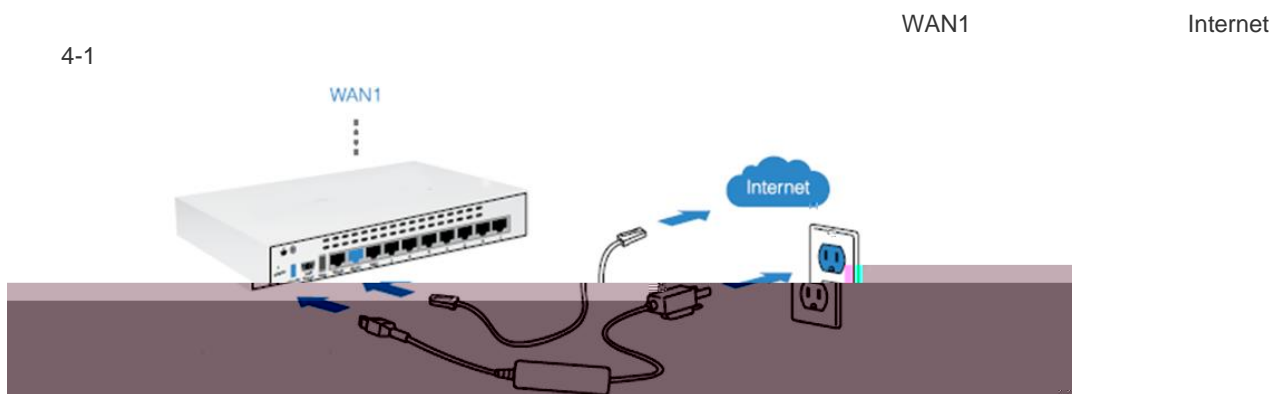
SFP

---

### 3.10

# 4

## 4.1



4-1

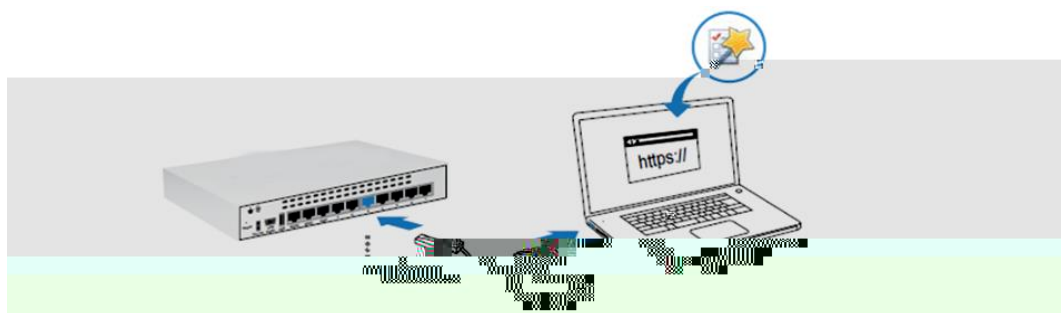
Web

admin

LAN

PC

IP : <https://192.168.1.99>



4-2

2

PC

Console

1)

2)

USB	Console	USB	Console	Console	USB	PC
	PC 4-3		" "	" "	COM LPT	COM

(COM5)

4-3

9600 8 1

3)

not connected - SecureCRT

File Edit View Options Transfer Script Tools Help

Connect

New Session Wizard

This wizard will help you create a new session for connecting to:

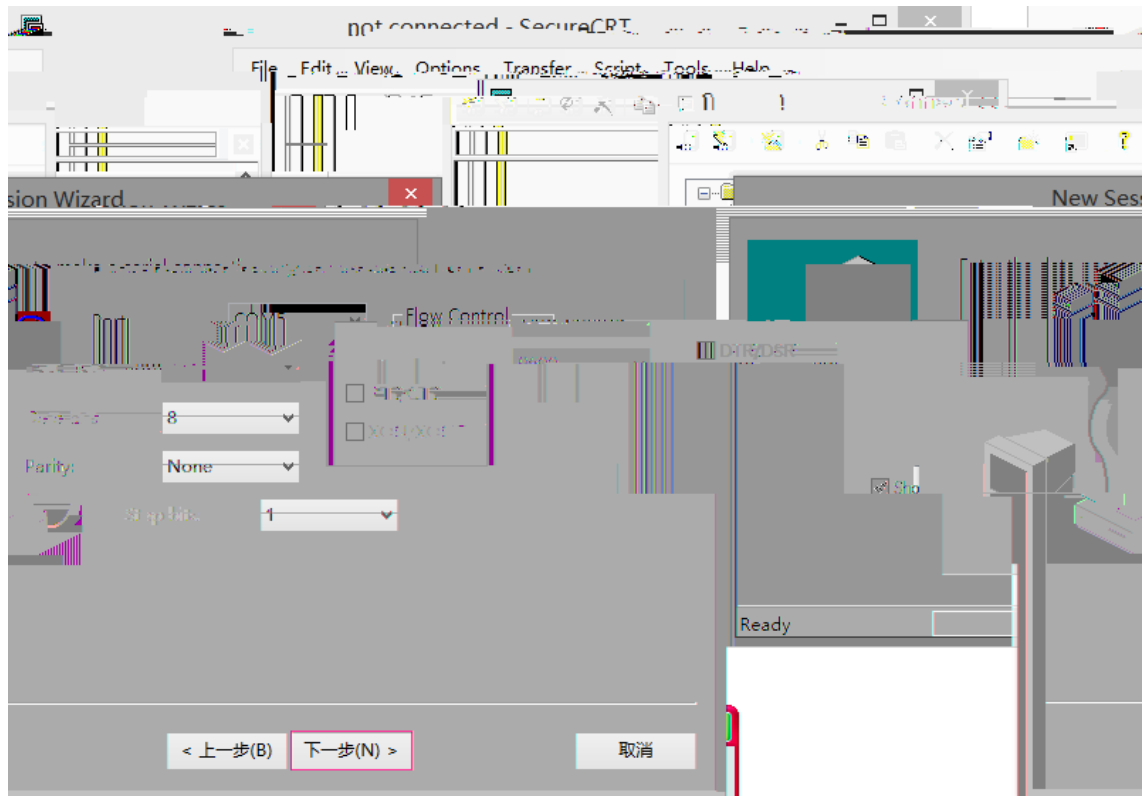
What type of connection do you want to establish?

Protocol: Serial

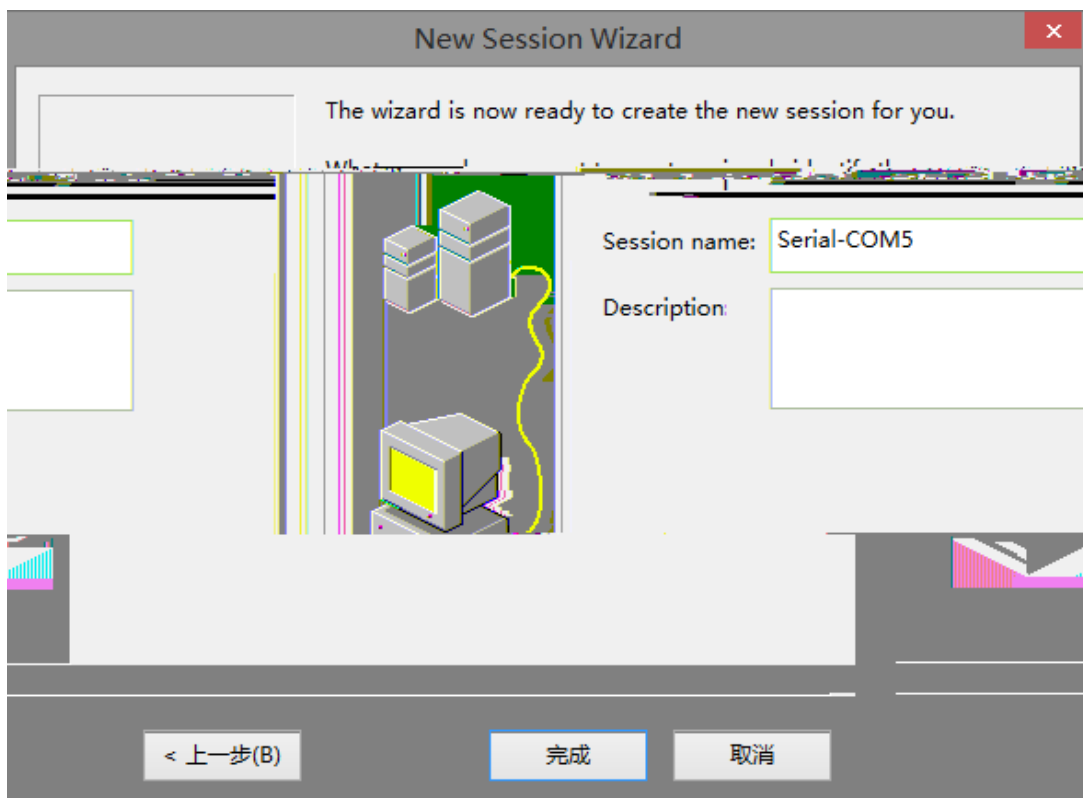
Ready

取消 下一步(N) > 完成

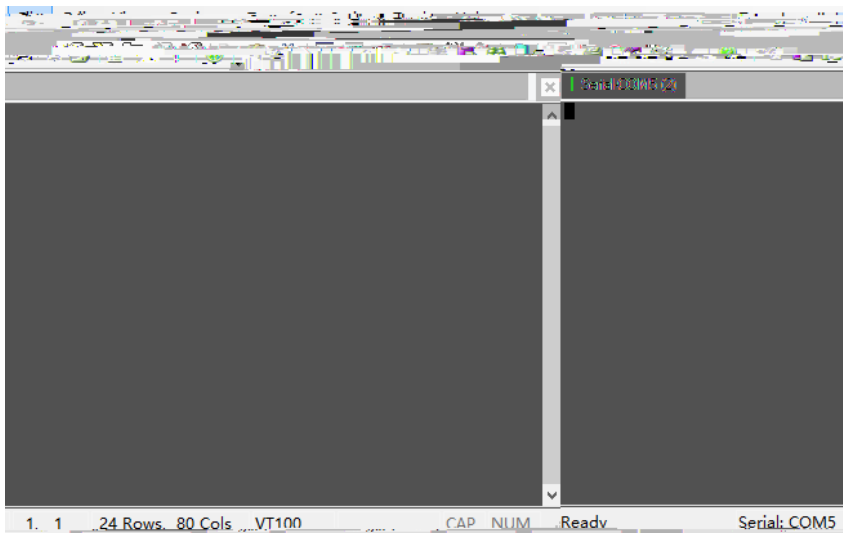
4)



5)



6)



## 4.2

PC

# 5

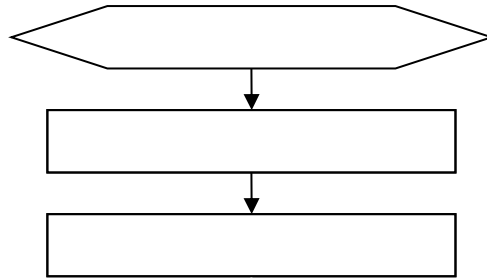
## 5.1

RG-



# 6

## 6.1



## 6.2

Status

Power

A

RG-WALL1600-M0



# B

RG-WALL1600-M6600E

19

7

5

7

10

SFP+

5

10

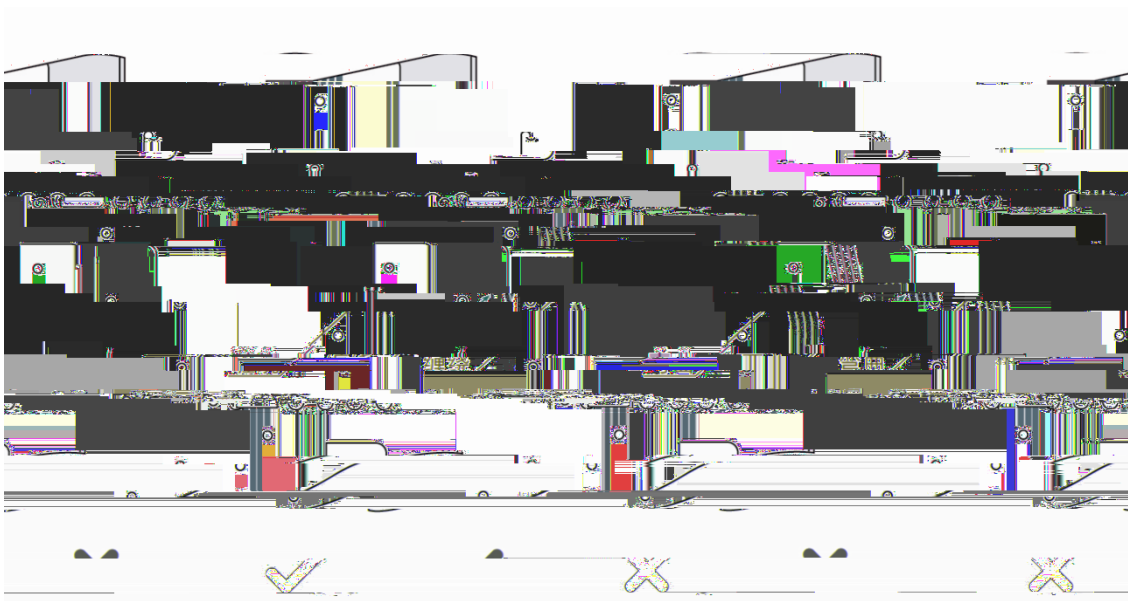
25

20

10

D-1

D-1



30mm

D-2

D-2



D-3

D-3

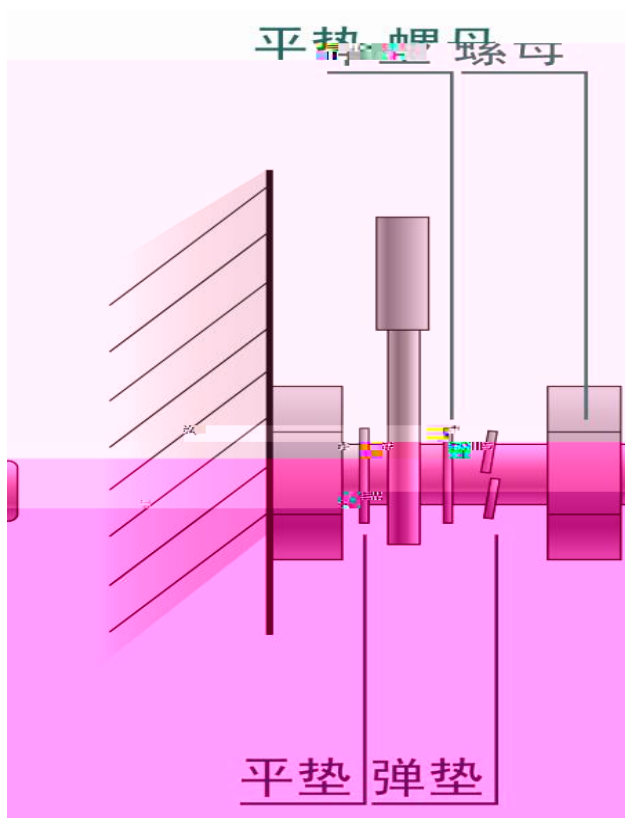


220V

-48V

D-4

D-4



mm	mm
10	80~150
10~30	150~200
30	200~300