



RG-Scan

V1.0

©2018



1

1.1 RG-Scan 2000E

2

2.1

2.2

4.3.5

4.3.6 License

4.3.7

5

5.1

5.2

6

6.1

6.2

1

RG-Scan

RG-RG-Scan

	*	430*450
		12kg
		0-40
		-20~70
		5%~90%
		2000m

RG-Scan 2000E



- 1 RST
 - 2 PWR power HDD
 - 3 Console RJ45
 - 4 USB
 - 5 6
 - 6 1 5
- RG-SEC-8GE 8 RG-SEC-8SFP 8 RG-SEC-4GE4SFP 4 4 RG-SEC-2XEF
 2 SFP+

<5s

>=5s

	PWR		

	HDD		
		Link	10M
		Data	

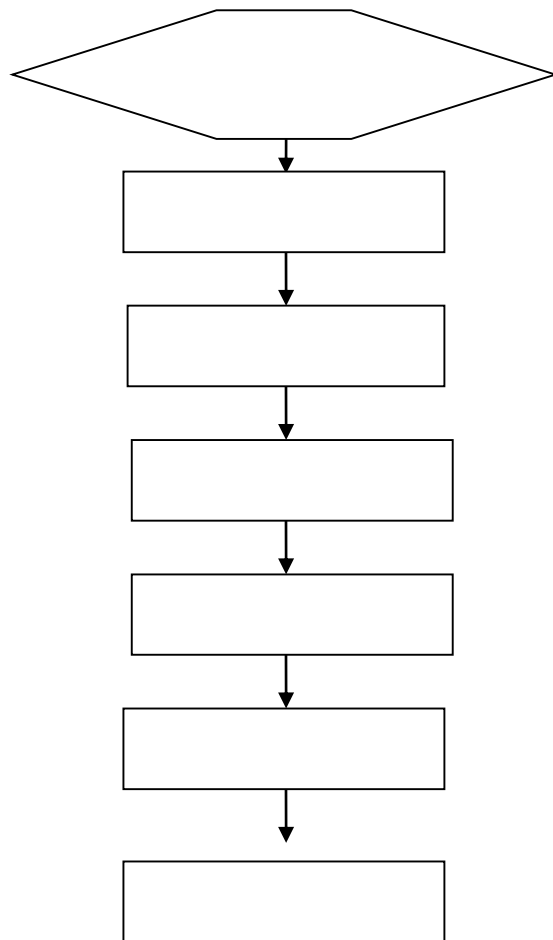
2

2.1

RG-Scan	1
	1
	2
	1

2.2

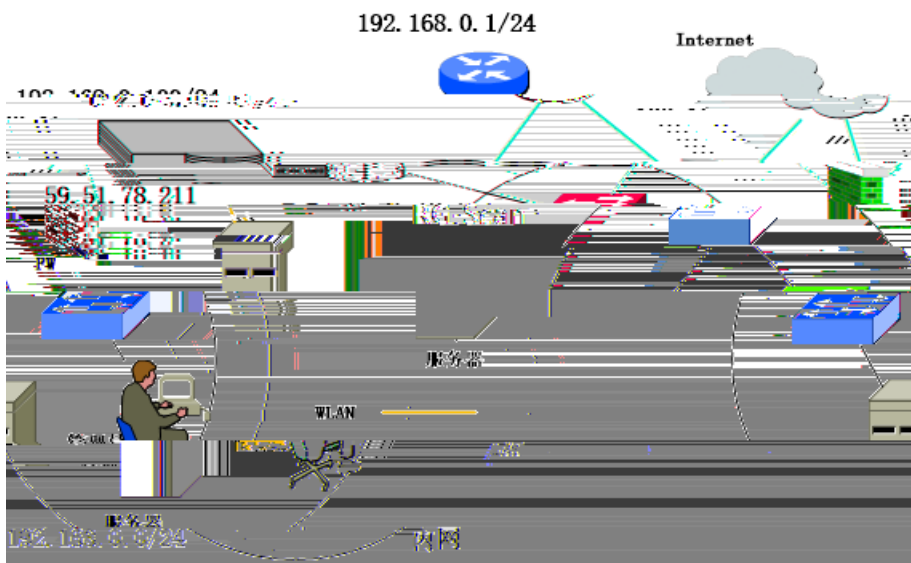
a



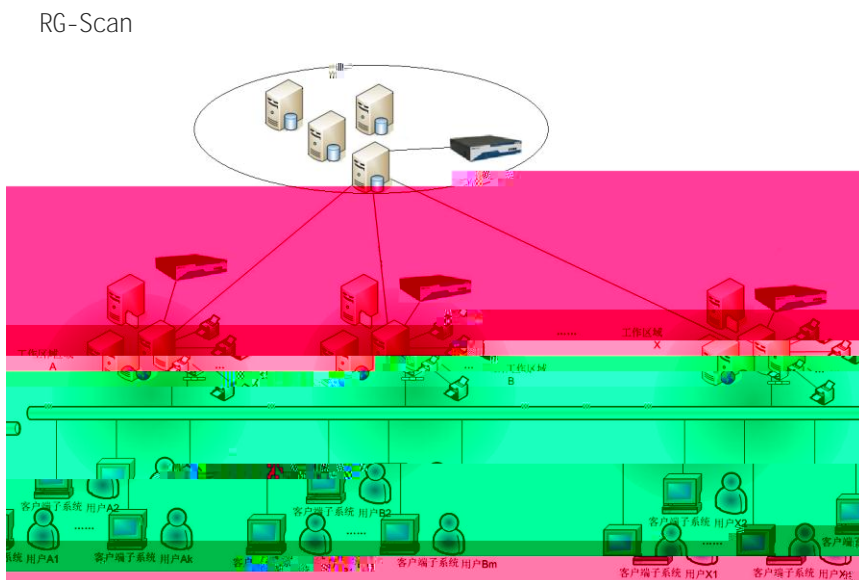
4

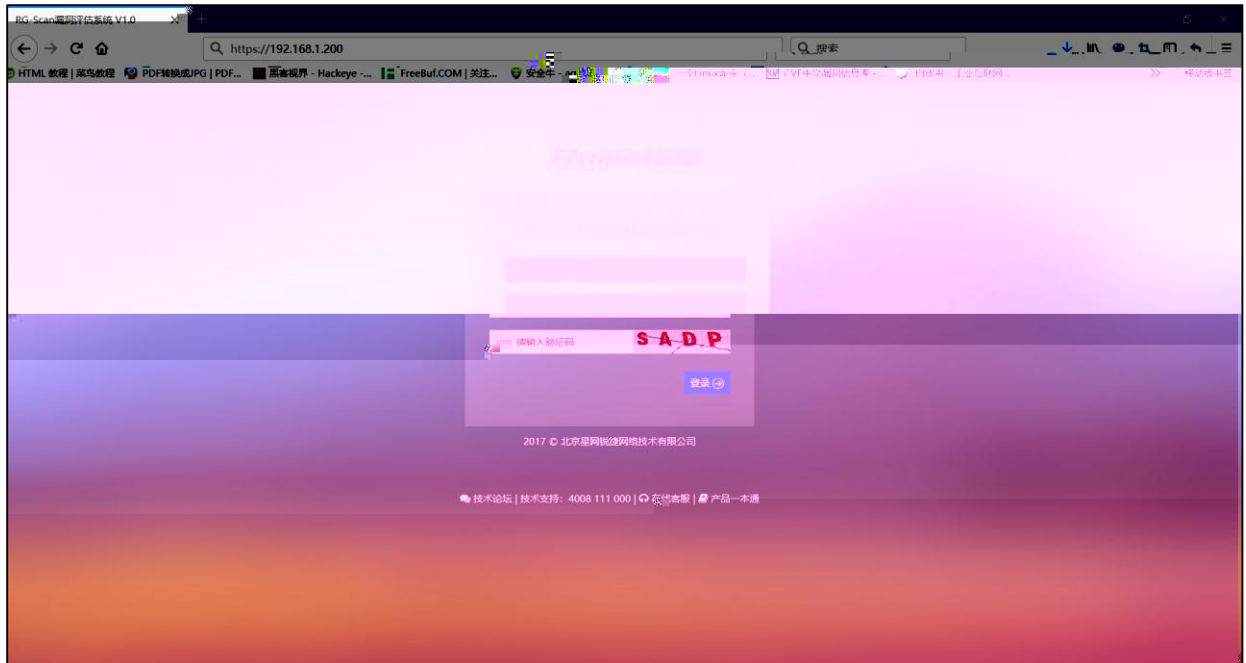
4.1

RG-Scan



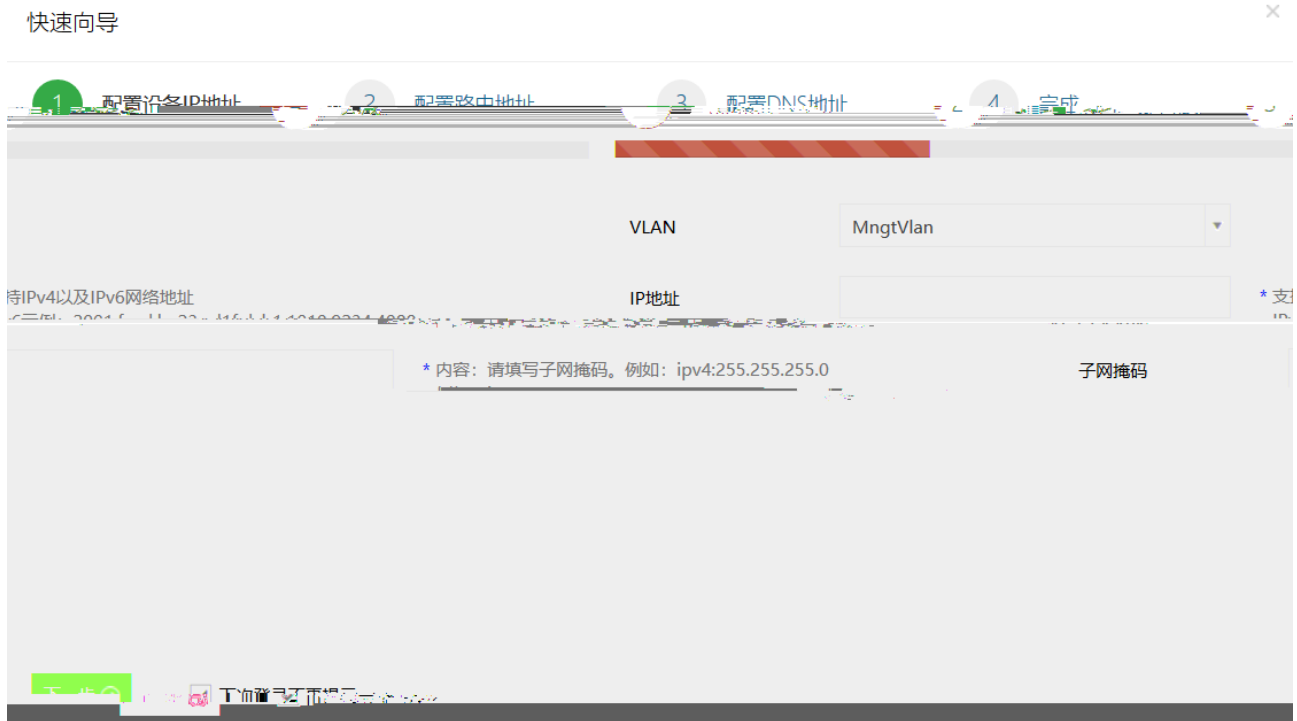
RG-Scan





4.3.4

1) IP

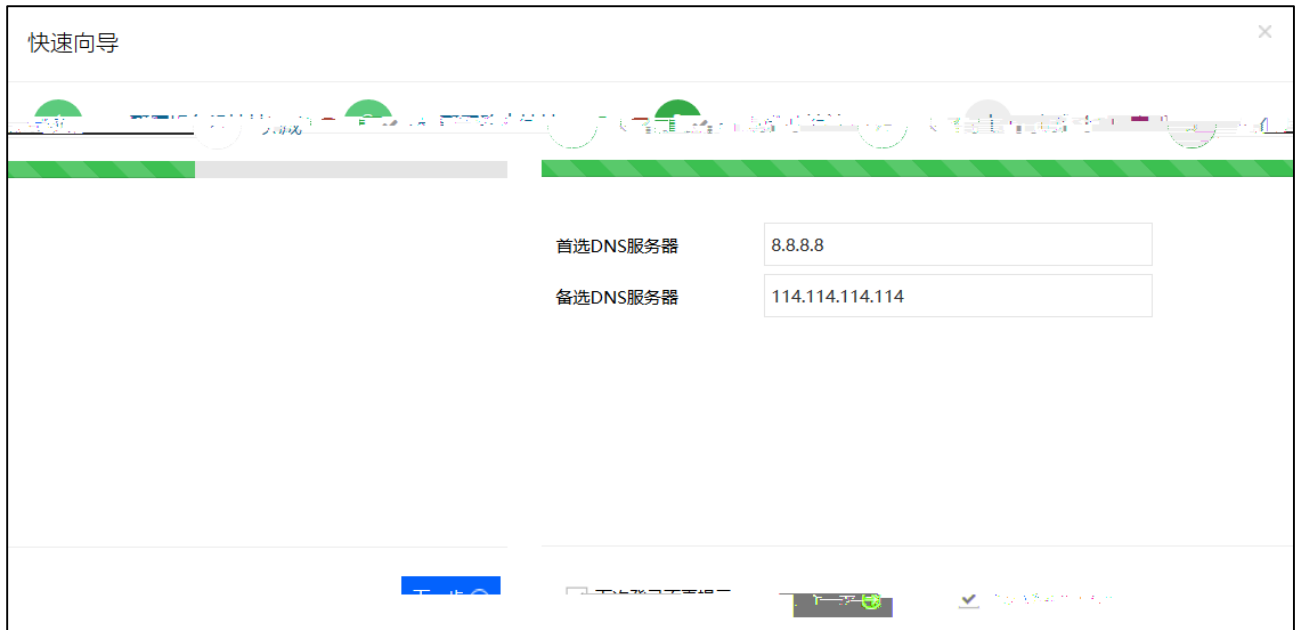


1.2.3 IP

2)

1.2.4 IP

3) DNS



1.2.5 DNS

4)

4.3.7

1. Ping Ping
 - a.
 - b. IP
2.
 - a. 80
 - b. httpserver
3. Ping WGET RG-Scan

5

5.1

PWR

HDD

BYP

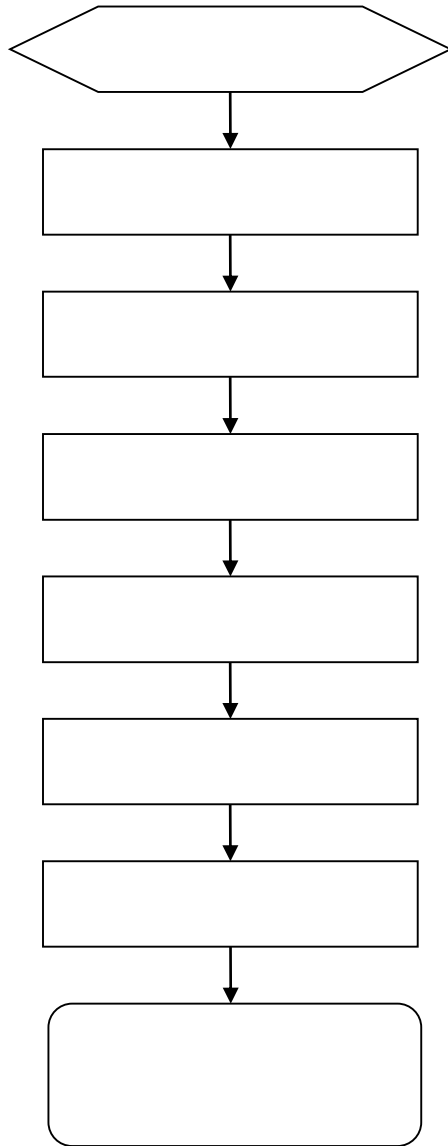
Bypass

ACT

Link

6

6.1



6.2

1

RG-Scan

RG-Scan

RG-Scan

l i c e n s e

l i c e n s e

RG-Scan

l i c e n s e

RG-Scan

l i c e n s e

2 SSH

IP

SSH

IP

SSH

PC

SSH

IP

3

account

4 license

6

admin

ssh