

Ø W

⌘

î æ k

z ðid

z Ð ' K

z à

⌘

z iH <http://www.ruijie.com.cn>

z iH

1 cp

PC-2DP48DC-E

©iHã

gi® RNM

9M

kU

48Mk

ž

ó

ož

1.1 PC-2DP48DC-E

1.1.1 Pã

= 1-1 Pã =

CY	PC-2DP48DC-E
Dd	48
V€ Ê t..	0°C ñ 45°C@0~1800ce
¤ Ê t..	-40°C~ 70°C
V€ Ê y.	5% ñ 95% RHk ð
¤ Ê y.	5% ñ 95% RHk ð
≠ x l x m mmd	484.6*102.85*66
• kgd	3.99

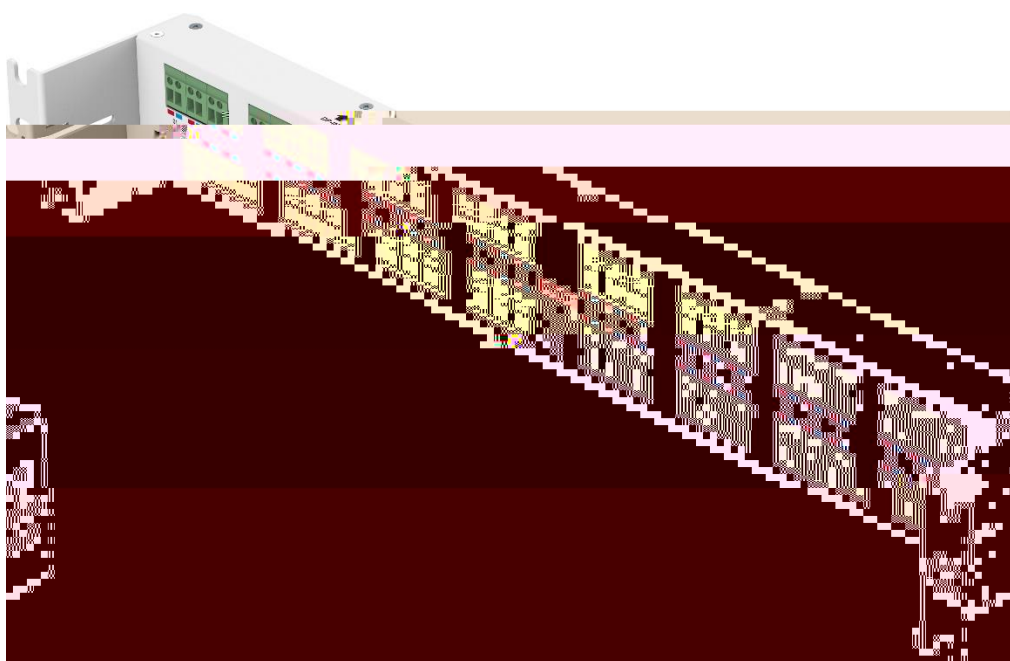
= 1-2 ž DB78 ž

ž.	1.5M
ø.	34mm
ø.	77mm
ø.	23mm
Ÿ	48PIN
žá	20AWG
ž	þ
že	PVC
ž	PVC
Ÿ	3A/Pin
LLCR	P

Â	P-Py 500Vz P-Shelly 1500V
Ë	100N
7'	176N Max.
ð	14.5N Min.

1. Ø 450

D



2. d 450



3. Ø 450

D

d



4.  

5.  

6.  

2 €

2.1

 A€

-
-

2.1.1

z  

z 4  

¿  

z    

z

z xiv/2%

ož

z xyg

ož

3 cē

ē J.Ńv.

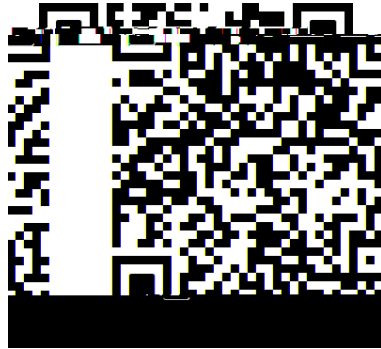
kĚŃ.

Ď Ā F

ĚĚ

Ě

č 3-1 ĚĚ



3.2 W

3.3 Gb

$\frac{z}{z} = \frac{NM \cdot \frac{1}{z} \cdot NM}{z}$
 $z \cdot x = \frac{NM \cdot \frac{1}{z} \cdot NM}{z}$

3.4 LG

$\frac{e}{L} = \frac{L}{y}$
 (1) $H_3 \cdot 2 \cdot L = 6 \cdot M_4 \cdot 8 \cdot X \cdot z$
 (2) $1 \cdot \frac{L}{c}$

(3) ... 6 M4x8X 1 2 L° ě ě ož
 3-2 LG i 3

3.5 ě ě G

 ě
 *4EH@N@GZ17P >

x 5â ò y

(1) 3. Y 1 ě z

(2) x ě ož

3-3 ě G i 3

3.6

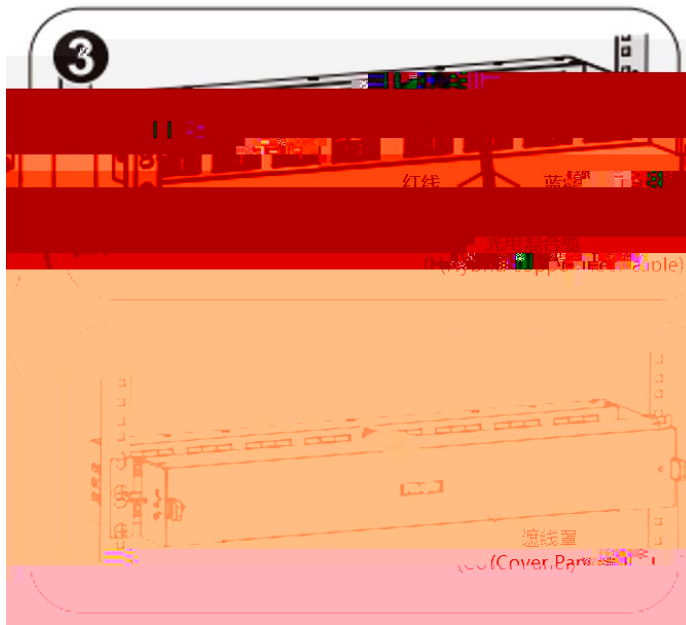
x5â ò y

(1) @ 9~10mmz

(2) + Rôe k 1° %Nμ ē + k w ... %r-
z

(3) x ē 7Q k° z

¢ 3-4 G i ¢

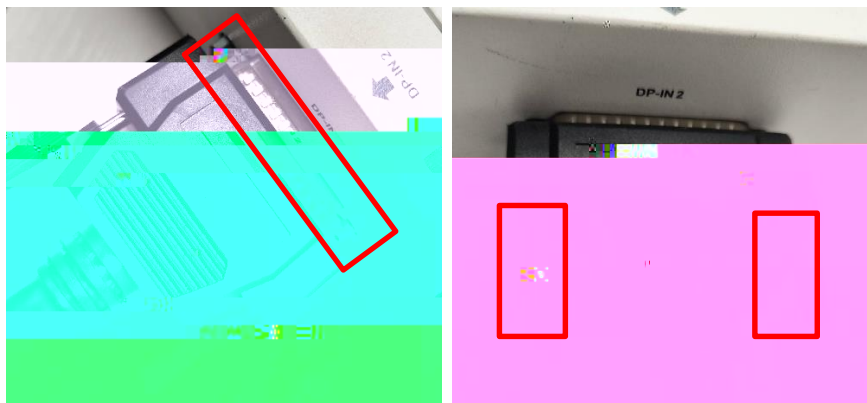


3.7

5â ò y

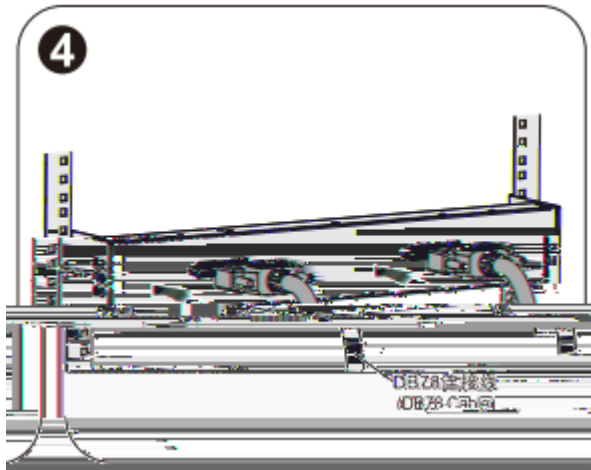
(1) Gē NM DP-IN1oDP-IN2Mz

(2) 1 DB78N DP-INM DP-IN2Mz k g
- DB78Nž



(3) 1 DB78N DB78NM DP-OUTM DB78Nž k g-

ç 3-5 ̄ ı ç



3.8 6

̄

- (1) ̄ /R; PC-2DP48DC-E3 ̄
- (2) ̄ ©k ̄ z
- (3) ̄ ̄ ̄ ̄ z
- (4) ̄ Eã DB78 ̄ ̄ + NMB ̄ ̄

4 mě

4.1 mě

4.2 mě

m 1u mě

ě

° ě mě PDě DPBOXě AP6P° I ož

oě-

g 1h DB78Nč ě DP-INNMNč z

g 2h DB78Nč Ň DP-OUTNMNč

g 3h

g 4h PSEě DPBOXč ě ě z 3 DPBOX6P° Q lk áP ° ě ě z

g 5h PSEě N DPBOXk Lč ě ž z 3 DPBOX 6P° Q lk áPě ě ě ož

